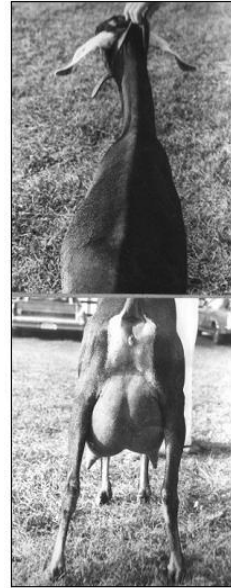
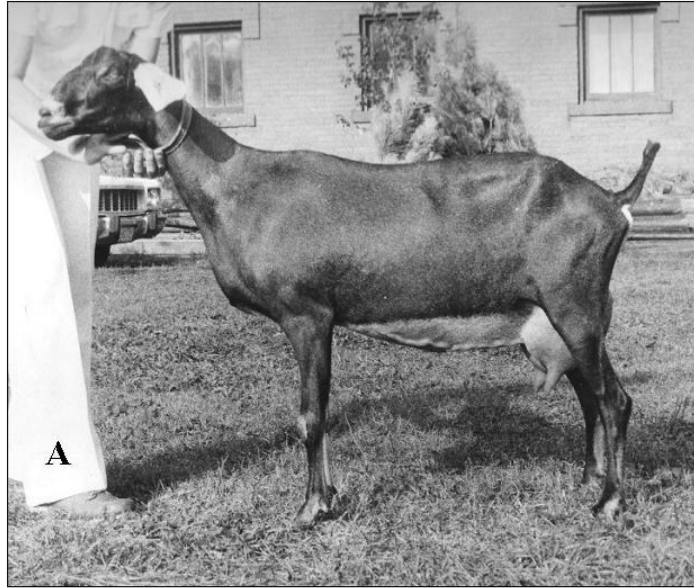
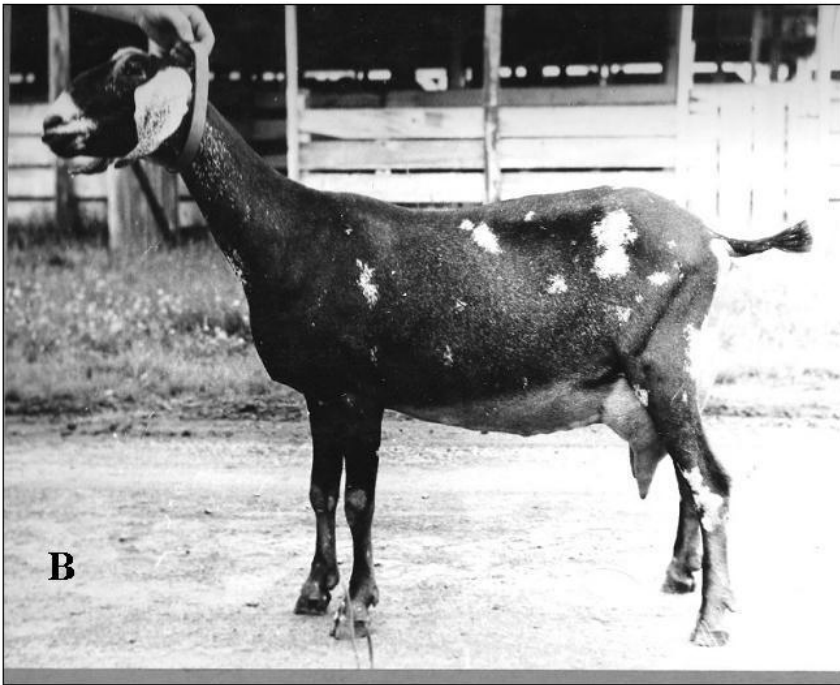
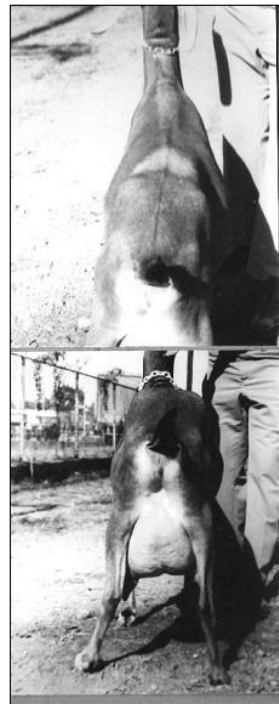
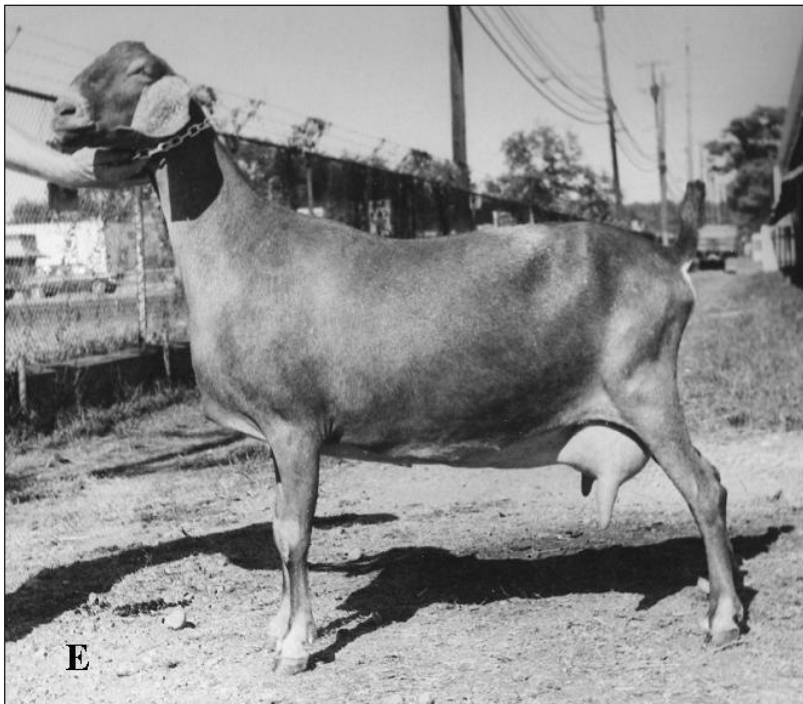
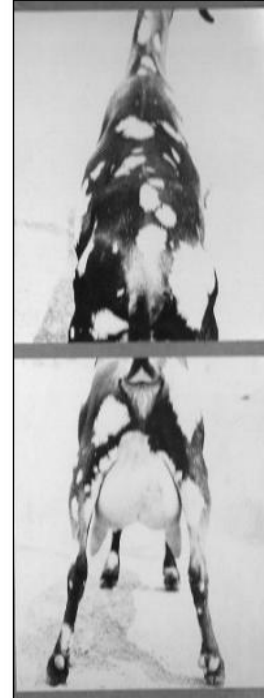
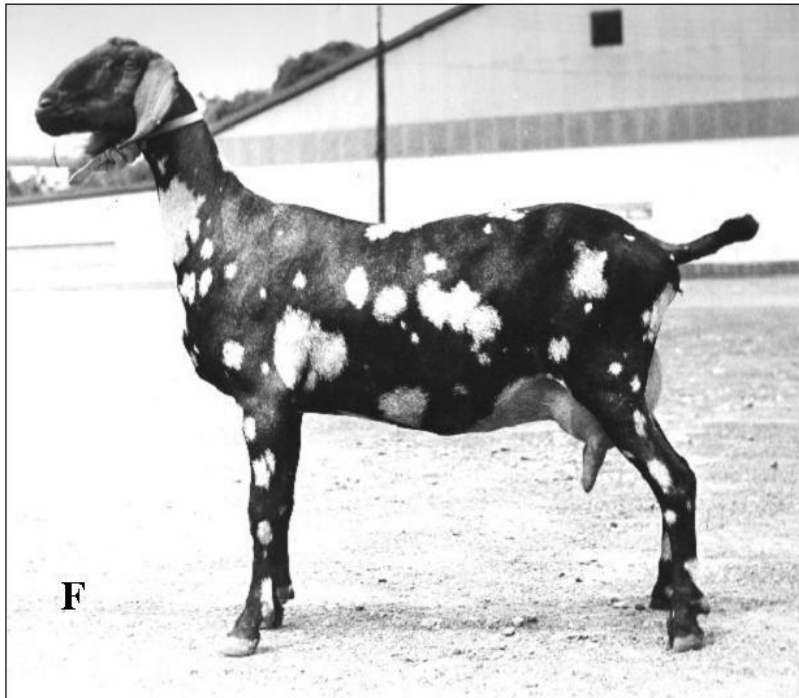


***NUBIAN 2-3 YEAR OLDS***  
***(This is a larger class with side and rear views)***









I have placed this class of \_\_\_\_\_ (age)  
 \_\_\_\_\_ (breed)  
 \_\_\_\_\_ (milkers)

One is placing over Two because she has an advantage in:  
 \_\_\_\_\_ (category); \_\_\_\_\_ (specific) & \_\_\_\_\_ (specific)  
 \_\_\_\_\_ (category); \_\_\_\_\_ (specific) & \_\_\_\_\_ (specific)  
 One grants to Two \_\_\_\_\_ (specific)

Two is placing over Three with her advantage in:  
 \_\_\_\_\_ (category); \_\_\_\_\_ (specific) & \_\_\_\_\_ (specific)  
 \_\_\_\_\_ (category); \_\_\_\_\_ (specific) & \_\_\_\_\_ (specific)  
 Two grants to Three \_\_\_\_\_ (specific)

Three is placing over Four for her advantage in:  
 \_\_\_\_\_ (category); \_\_\_\_\_ (specific) & \_\_\_\_\_ (specific)  
 \_\_\_\_\_ (category); \_\_\_\_\_ (specific) & \_\_\_\_\_ (specific)  
 Three grants to Four \_\_\_\_\_ (specific)

*Four is placing over Five for her advantage in:*

\_\_\_\_\_ (category); \_\_\_\_\_ (specific) & \_\_\_\_\_ (specific)  
\_\_\_\_\_ (category); \_\_\_\_\_ (specific) & \_\_\_\_\_ (specific)

*Four grants to Five* \_\_\_\_\_ (specific)

*Five is placing over Six for her advantage in:*

\_\_\_\_\_ (category); \_\_\_\_\_ (specific) & \_\_\_\_\_ (specific)  
\_\_\_\_\_ (category); \_\_\_\_\_ (specific) & \_\_\_\_\_ (specific)

*Five grants to Six* \_\_\_\_\_ (specific)

*Six should be commended for her:*

\_\_\_\_\_ (specific)

Based on what you can see in this class, make a placing and then write out a set of reasons using the [ADGA Scorecard](#) and the [Suggested Terminology](#) for reference. Put these in an email and send it to Doug Thompson at [dthompson@acegroup.cc](mailto:dthompson@acegroup.cc). He will review your reasons and send back a reply, along with the official placing and reasons.

[Main Menu](#)